

Apex2

Personal Air Sampling Pump

- Class beating performance
- Bluetooth® connectivity and Airwave software
- High wearer acceptance
- Motion sensing
- Simple operation
- Ingress protection (IP65) for use in harsh environments
- Intrinsically safe for use in flammable atmospheres
- Data logging models available
- ISO13137 compliant

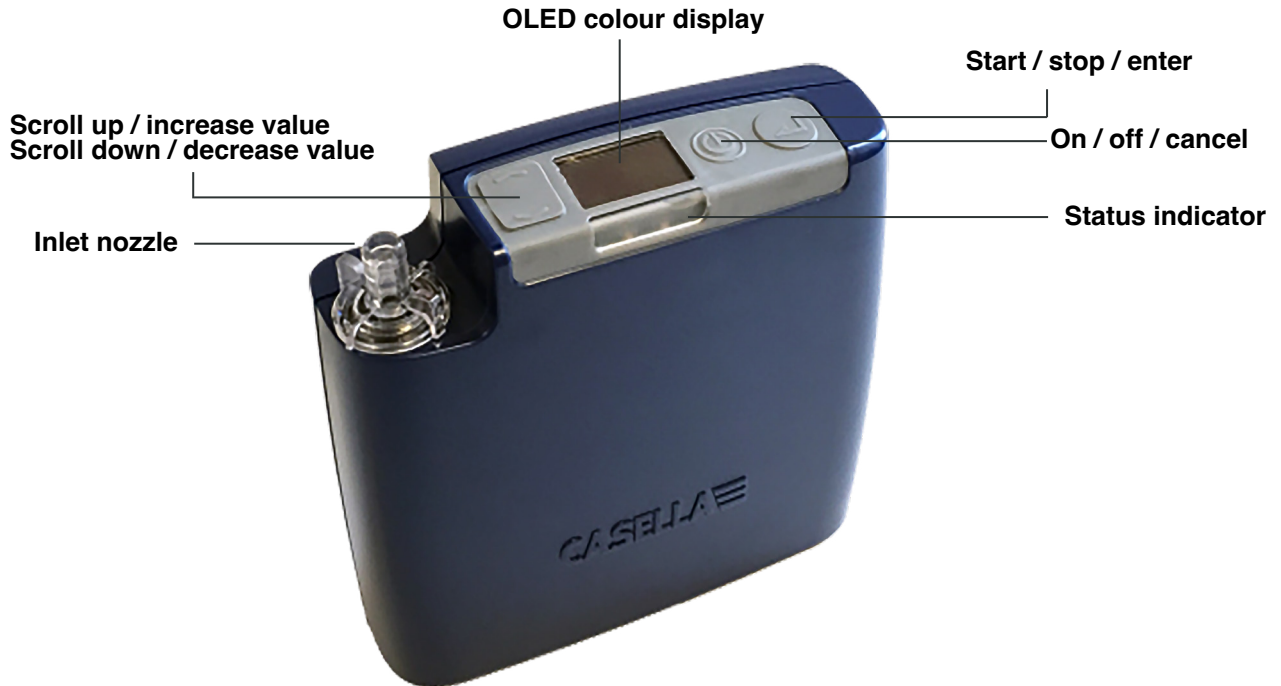


Overview

The Apex2 range of sampling pumps has class beating performance and all models are Intrinsically Safe for use in flammable atmospheres. Get connected with the Airwave® mobile software and easily send data directly to your laptop.

Application

- Asbestos
- Occupational Hygiene
- Mining
- Indoor air quality
- Construction sites



Simple Operation

The Apex2 has a simple user interface and menu structure. Using only 4 buttons you can easily navigate through the colour coded set-up menus.

- Single key press to start a run
- Displays flow as well as battery life in remaining hours
- Colour coded display e.g. green when pump is running



Colour coded display showing remaining



Easy to use menu



Use Airwave software on a mobile device to remotely monitor multiple pumps, without disturbing the wearer.



Start, stop and monitor the pump remotely via an iOS or Android device.

(Airwave is available free in the Apple App Store and Google Play Store)

Class Beating Performance

Whatever media you're using, you can be assured that the Apex2 has the power to handle any personal monitoring regime. Optimised at around 2l/min, the flow at which most occupational hygiene measurements are made, the Apex2 has outstanding back pressure capability.

- Pressure and temperature compensation
- Exceptional pulsation control
- High back pressure
- Long battery life

These features all ensure that you can be confident in getting good, accurate samples with various filters.

“We’re using lots of membrane filters so excellent back pressure is a must.”

Easy To Wear

With its slim, light weight and ergonomic design, the pump is unobtrusive to the wearer being monitored. A sturdy clip with a lifetime guarantee means it's secure and the detachable rubber boot guards against knocks.

- Smooth finish means it's easy to decontaminate
- Lockable keypad to prevent tampering
- Motion detection to show the pump has been worn



A protective rubber boot is included

Get Connected

Monitor your pump remotely with Bluetooth® and the supporting Airwave software on your phone or tablet.

- Monitor the pump without disturbing the wearer
- Monitor multiple pumps
- Start and stop pumps remotely
- Email data direct to your PC

Intrinsically Safe

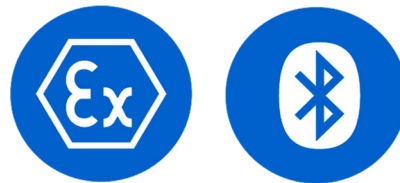
All models of the Apex2 are Intrinsically Safe (IECEx). The Apex2 has been designed specifically to be used in potentially explosive areas in the oil and gas, petrochemical and pharmaceutical industries as well as being suitable for use in the mining industry.

Ex ia I Ma
 Ex ia IIC T4 Ga
 Ex ia IIIC T135°C Da
 (Ta = -20°C to +45°C)

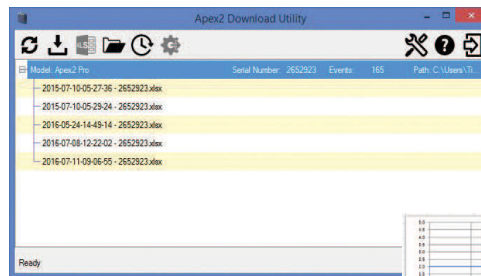
Data And Reporting

The Apex2 can store up to 200 separate runs, storing data including start time and date, duration, volume sampled and motion index.

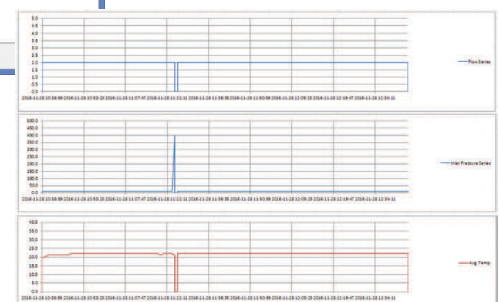
- Simple to use download utility for PCs
- Graphs flow, motion and back pressure
- Shows events such as blockages
- Downloads into Excel to easily view and share data



Starter kit available to include sampling accessories

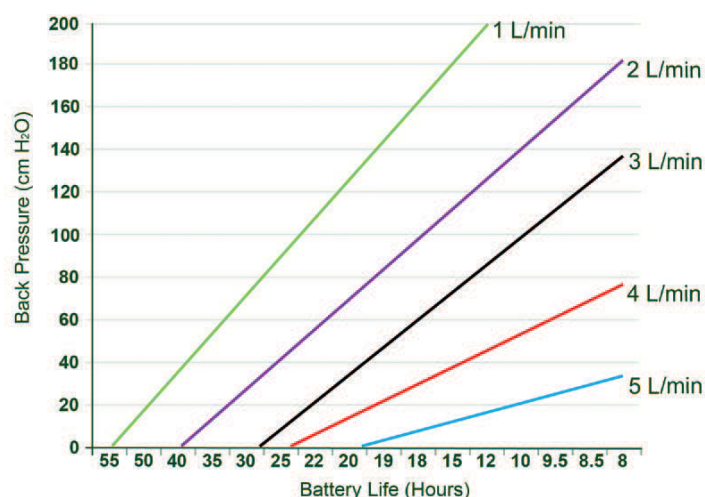


Free download utility available



Technical Specifications		Model Selection			
Flow performance		Apex2 Models	Apex2	Plus	Pro
Flow range ml/min	1000-5000	Intrinsically safe	●	●	●
Low flow range ml/min	5-500 (requires an adapter)	Motion sensor	●	●	●
Flow control	< ± 5% at calibrated point	Run duration timer		●	●
Pulsation	<10% @ 2l/min	Bluetooth		●	●
Fault detector	Auto restart	PC download		●	●
Operating		Inlet pressure sensing		●	●
Display	Colour OLED	Logging of flow and motion			●
Controls	4 buttons	Fully programmable timers			●
Status indicators	Red/Green LED	Ordering Information			
Dimensions	112x37x102mm	Apex2IS	Apex2 I.S. standard pump		
Weight including boot	490g	Apex2ISPlus	Apex2 I.S. plus pump		
Environmental		Apex2ISPro	Apex2 I.S. pro pump		
Temperature	Operation 0 to 45°C Storage -10 to 50°C	All pumps include 1m tube, field guide, certificate of conformity and protective rubber boot.			
Humidity	30-95% RH (non-condensing)	Apex2 Accessories			
Barometric pressure	Auto-correcting	209152B/KIT	Single docking station for Apex2 inc PSU & USB cable		
Electrical		209156C/KIT	5-Way docking station for Apex2 inc PSU & USB cable		
Battery type	Li-Ion with level indicator	209025C	Protective rubber boot (included with pump)		
Chargers	Single or 5-way	Apex2 Kits			
Charge time	Typically <6hrs	APEX2IS/K5	5-Way Apex2IS standard kit		
Approvals	IECEX & ANZEX EN1232 Compliant ISO 13137 Compliant Ingress Protections: IP65	APEX2ISPLUS/K5	5-Way Apex2IS plus kit		
		APEX2ISPRO/K5	5-Way Apex2IS pro kit		

Additional to the 5 off Pumps, each kit includes, 1m tubing and male luer per pump, plus 1 field guide, Certificate of Conformity, 5-way docking station, PSU, USB cable and air sampling handbook.



Back pressure vs battery life

Accessories



Cyclone



Apex2 with 5-Way charging kit